

MONTHLY MEMBERSHIP PROGRESS REPORT

LOCATION ONTARIO

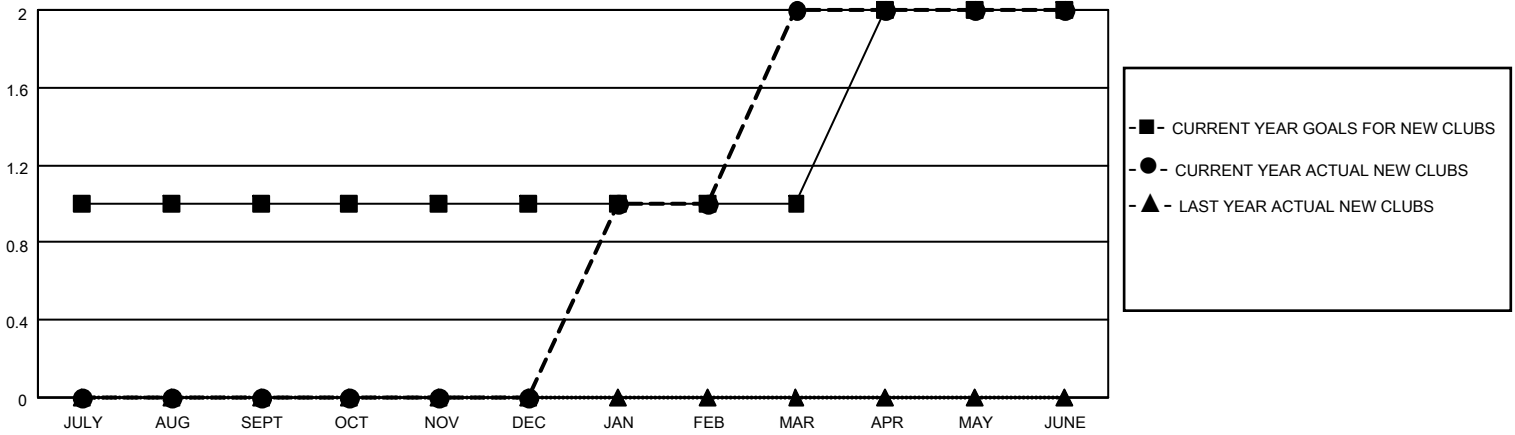
District A 3

Results as of: 6/30/2021

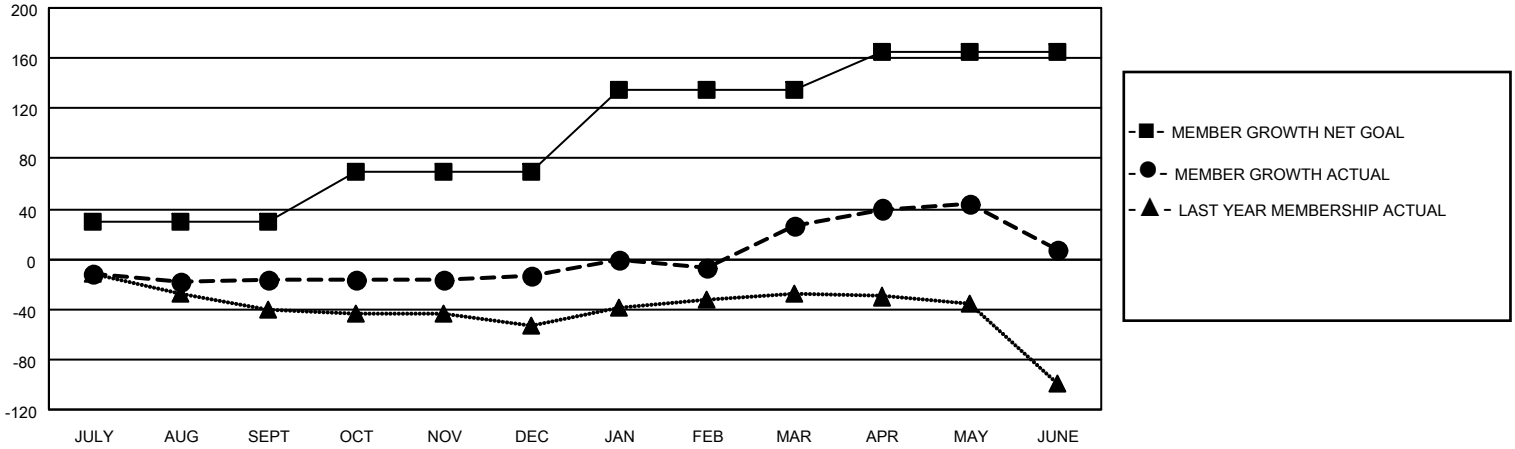
Clubs			
RESULTS FOR 2020-2021			
QUARTER	NEW CLUB GOAL	NEW CLUBS	DROPPED CLUBS
JULY/AUG/SEPT	1	0	2
OCT/NOV/DEC	0	0	0
JAN/FEB/MAR	0	2	0
APR/MAY/JUNE	1	0	0

Members			
RESULTS FOR 2020-2021			
QUARTER	MEMBER GROWTH NET GOAL	MEMBER GROWTH ACTUAL	DROPPED MEMBERS ACTUAL (including transfers)
JULY/AUG/SEPT	30	32	39
OCT/NOV/DEC	40	31	28
JAN/FEB/MAR	65	62	20
APR/MAY/JUNE	30	48	60

GOALS AND ACTUAL NEW CLUBS CUMULATIVE



GOALS AND ACTUAL MEMBERS CUMULATIVE



DROPPED CLUBS: 2

29 CLUBS OF 52 ADDED 1 OR MORE NEW MEMBERS

GENDER DISTRIBUTION

MALE 715 (58.75%)
FEMALE 502 (41.25%)

DROPPED MEMBERS

[CLICK HERE FOR CUMULATIVE MEMBERSHIP DATA](#)

DECEASED	21
CLUB CANCELLED	0
OTHER	126
TOTAL	147

TOTAL FAMILY UNIT MEMBERS	323
FAMILY MEMBERS PAYING HALF DUES	166